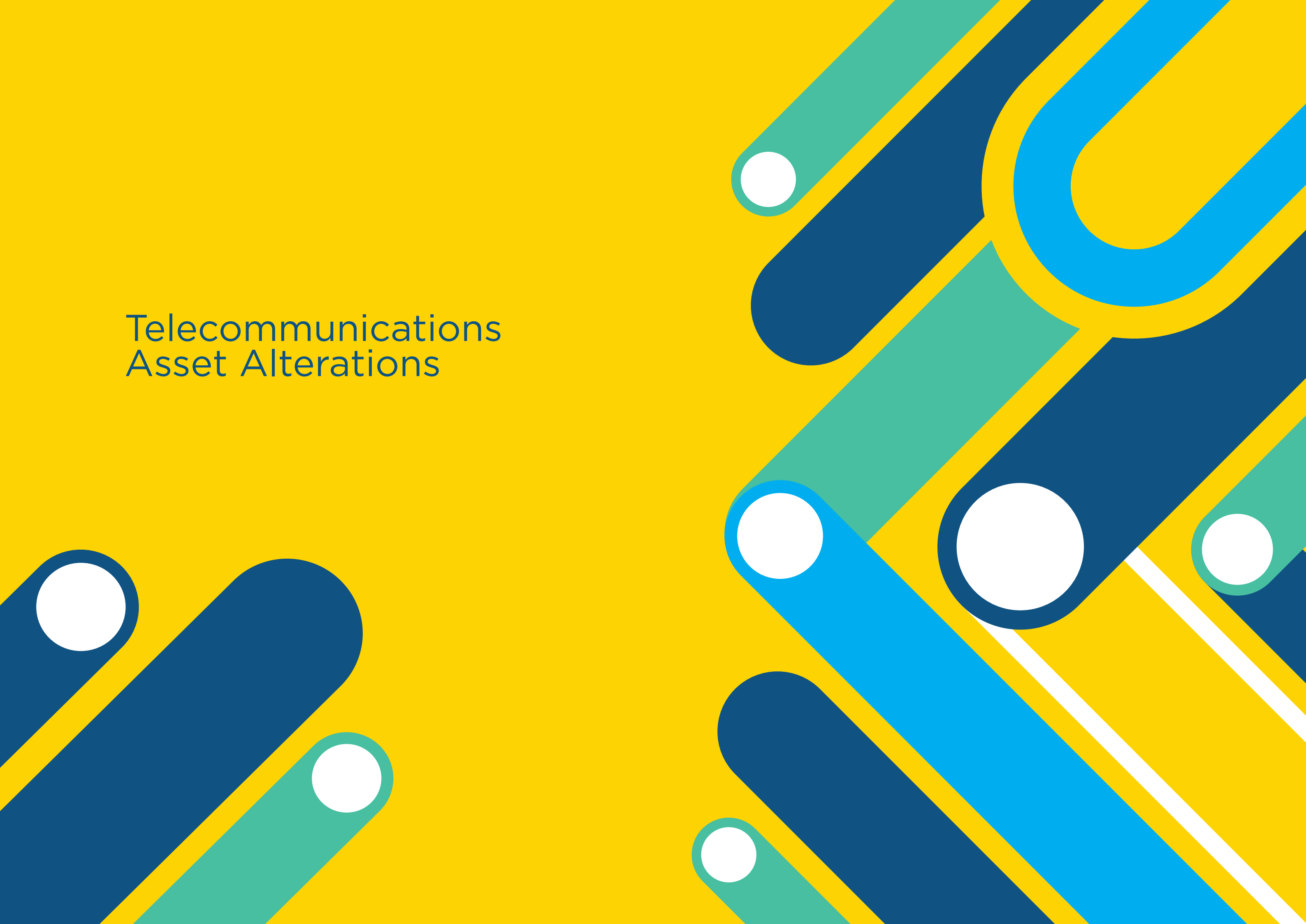


Telecommunications Asset Alterations





BUSCONNECTS DUBLIN

CORE BUS CORRIDORS INFRASTRUCTURE WORKS

CLONGRIFFIN TO CITY CENTRE CORE BUS CORRIDOR SCHEME

TELECOMMUNICATIONS ASSET ALTERATIONS

DRAWING SERIES NUMBER(S)

BCIDA-ACM-UTL_IX-0001_XX_00-DR-CR-0006

BCIDA-ACM-UTL_KP-0001_XX_00-DR-CR-0005

BCIDA-ACM-UTL_UL-0001_XX_00-DR-CR-0006 to 0021

DRAWING SERIES DESCRIPTION

CLONGRIFFIN TO CITY CENTRE CORE BUS CORRIDOR SCHEME. TELECOMMUNICATIONS ASSET ALTERATIONS. COVER SHEET

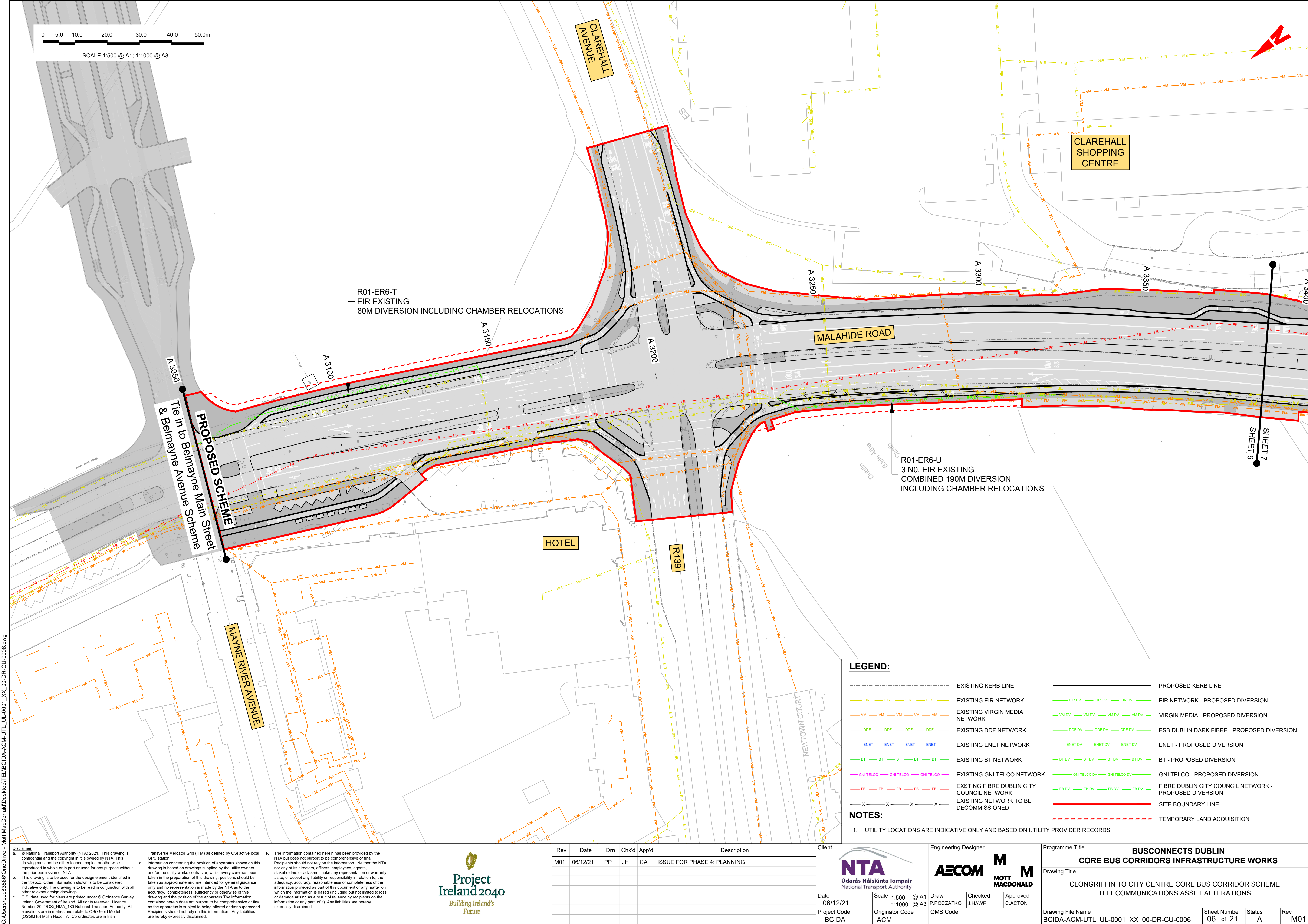
CLONGRIFFIN TO CITY CENTRE CORE BUS CORRIDOR SCHEME. TELECOMMUNICATIONS ASSET ALTERATIONS. KEY PLAN

CLONGRIFFIN TO CITY CENTRE CORE BUS CORRIDOR SCHEME. TELECOMMUNICATIONS ASSET ALTERATIONS

C:\users\pc8366\appdata\local\projectwise\work\dm\mot\gb-pw-04\0208950\BCIDA-ACM-UTL_IX-0001_XX_00-DR-CU-0006.dwg

<div>Disclaimer</div> <div><div>a. © National Transport Authority (NTA) 2021. This drawing is confidential and the copyright in it is owned by NTA. This drawing must not be either loaned, copied or otherwise reproduced in whole or in part or used for any purpose without the prior permission of NTA.</div><div>b. This drawing is to be used for the design element identified in the titleblock. Other information shown is to be considered indicative only. The drawing is to be read in conjunction with all other relevant design drawings.</div><div>c. O.S. data used for plans are printed under © Ordnance Survey Ireland Government of Ireland. All rights reserved. Licence Number 2021/OSI_NMA_180 National Transport Authority. All elevations are in metres and relate to OSI Geoid Model (OSGM15) Mean Head. All Co-ordinates are in Irish</div></div>	<div>Transverse Mercator Grid (ITM) as defined by OSI active local GPS station.</div> <div>d. Information concerning the position of apparatus shown on this drawing is based on drawings supplied by the utility owners and/or the utility works contractor, whilst every care has been taken in the preparation of this drawing, positions should be taken as approximate and are intended for general guidance only and no representation is made by the NTA as to the accuracy, sufficiency or completeness of the information shown on this drawing and the position of the apparatus. The information contained herein does not purport to be comprehensive or final as the apparatus is subject to being altered and/or superseded. Recipients should not rely on this information. Any liabilities are hereby expressly disclaimed.</div>	<div></div>	<table><tr><th>Rev</th><th>Date</th><th>Drn</th><th>Chk'd</th><th>App'd</th><th>Description</th></tr><tr><td>M01</td><td>06/12/21</td><td>PP</td><td>JH</td><td>CA</td><td>ISSUE FOR PHASE 4: PLANNING</td></tr><tr><td> </td><td> </td><td> </td><td> </td><td> </td><td> </td></tr><tr><td> </td><td> </td><td> </td><td> </td><td> </td><td> </td></tr><tr><td> </td><td> </td><td> </td><td> </td><td> </td><td> </td></tr></table>	Rev	Date	Drn	Chk'd	App'd	Description	M01	06/12/21	PP	JH	CA	ISSUE FOR PHASE 4: PLANNING																			<div><div>Client</div><div><div></div></div></div> <div><table><tr><td>Date</td><td>06/12/21</td><td>Scale</td><td>NTS @ A1 NTS @ A3</td></tr><tr><td>Project Code</td><td>BCIDA</td><td>Originator Code</td><td>ACM</td></tr><tr><td colspan="2">QMS Code</td><td colspan="2"> </td></tr></table></div>	Date	06/12/21	Scale	NTS @ A1 NTS @ A3	Project Code	BCIDA	Originator Code	ACM	QMS Code				<div><div>Engineering Designer</div><div><div></div><div></div></div></div> <div><table><tr><td>Drawn</td><td>Checked</td><td>Approved</td></tr><tr><td>P.PRAWATKAT</td><td>J.HAWE</td><td>C.ACTON</td></tr></table></div>	Drawn	Checked	Approved	P.PRAWATKAT	J.HAWE	C.ACTON	<div><div>Programme Title</div><div>BUSCONNECTS DUBLIN CORE BUS CORRIDORS INFRASTRUCTURE WORKS</div></div> <div><div>Drawing Title</div><div>CLONGRIFFIN TO CITY CENTRE CORE BUS CORRIDOR SCHEME TELECOMMUNICATIONS ASSET ALTERATIONS COVER SHEET</div></div> <div><table><tr><td>Drawing File Name</td><td>BCIDA-ACM-UTL_IX-0001_XX_00-DR-CU-0006</td><td>Sheet Number</td><td>01 of 01</td><td>Status</td><td>A</td><td>Rev</td><td>M01</td></tr></table></div>	Drawing File Name	BCIDA-ACM-UTL_IX-0001_XX_00-DR-CU-0006	Sheet Number	01 of 01	Status	A	Rev	M01
	Rev	Date	Drn	Chk'd	App'd	Description																																																								
M01	06/12/21	PP	JH	CA	ISSUE FOR PHASE 4: PLANNING																																																									
Date	06/12/21	Scale	NTS @ A1 NTS @ A3																																																											
Project Code	BCIDA	Originator Code	ACM																																																											
QMS Code																																																														
Drawn	Checked	Approved																																																												
P.PRAWATKAT	J.HAWE	C.ACTON																																																												
Drawing File Name	BCIDA-ACM-UTL_IX-0001_XX_00-DR-CU-0006	Sheet Number	01 of 01	Status	A	Rev	M01																																																							

DO NOT SCALE USE FIGURED DIMENSIONS ONLY



C:\Users\poc36666\OneDrive - Mott MacDonald\Desktop\TEL\BCIDA-ACM\UTL_UL-0001_XX_00-DR-CU-0006.dwg

Disclaimer


a. © National Transport Authority (NTA) 2021. This drawing is confidential and the copyright in it is owned by NTA. This drawing must not be either loaned, copied or otherwise reproduced in whole or in part or used for any purpose without the prior permission of NTA.

b. This drawing is to be used for the design element identified in the titlebox. Other information shown is to be considered indicative only. The drawing is to be read in conjunction with all other relevant design drawings.


c. O.S. data used for plans are printed under © Ordnance Survey Ireland Government of Ireland. All rights reserved. Licence Number 2021/OSI_NMA_180 National Transport Authority. All elevations are in metres and relate to OSI Geoid Model (OSGM15) Mean Head. All Co-ordinates are in Irish Transverse Mercator Grid (ITM) as defined by OSI active local GPS station.

d. Information concerning the position of apparatus shown on this drawing is based on drawings supplied by the utility owners and/or the utility works contractor, whilst every care has been taken in the preparation of this drawing, positions should be taken as approximate and are intended for general guidance only and no representation is made by the NTA as to the accuracy, completeness, sufficiency or otherwise of this drawing and the position of the apparatus. The information contained herein does not purport to be comprehensive or final as the apparatus is subject to being altered and/or superceded. Recipients should not rely on this information. Any liabilities are hereby expressly disclaimed.

e. The information contained herein has been provided by the NTA but does not purport to be comprehensive or final. Recipients should not rely on the information. Neither the NTA nor any of its directors, officers, employees, agents, stakeholders or advisers make any representation or warranty as to, or accept any liability or responsibility in relation to, the adequacy, accuracy, reasonableness or completeness of the information provided as part of this document or any matter on which the information is based (including but not limited to loss or damage arising as a result of reliance by recipients on the information or any part of it). Any liabilities are hereby expressly disclaimed.



Rev	Date	Drn	Chk'd	App'd	Description
M01	06/12/21	PP	JH	CA	ISSUE FOR PHASE 4: PLANNING



Údarás Náisiúnta Iompair
National Transport Authority

Date
06/12/21

Scale
1:500 @ A1
1:1000 @ A3

Project Code
BCIDA

Originator Code
ACM

Client

Engineering Designer

Drawn
P.POCZATKO

Checked
J.HAWE

Approved
C.ACTON

Programme Title
**BUSCONNECTS DUBLIN
CORE BUS CORRIDORS INFRASTRUCTURE WORKS**

Drawing Title
CLONGRIFFIN TO CITY CENTRE CORE BUS CORRIDOR SCHEME
TELECOMMUNICATIONS ASSET ALTERATIONS

Drawing File Name
BCIDA-ACM-UTL_UL-0001_XX_00-DR-CU-0006

Sheet Number
06 of 21

Status
A

Rev
M01

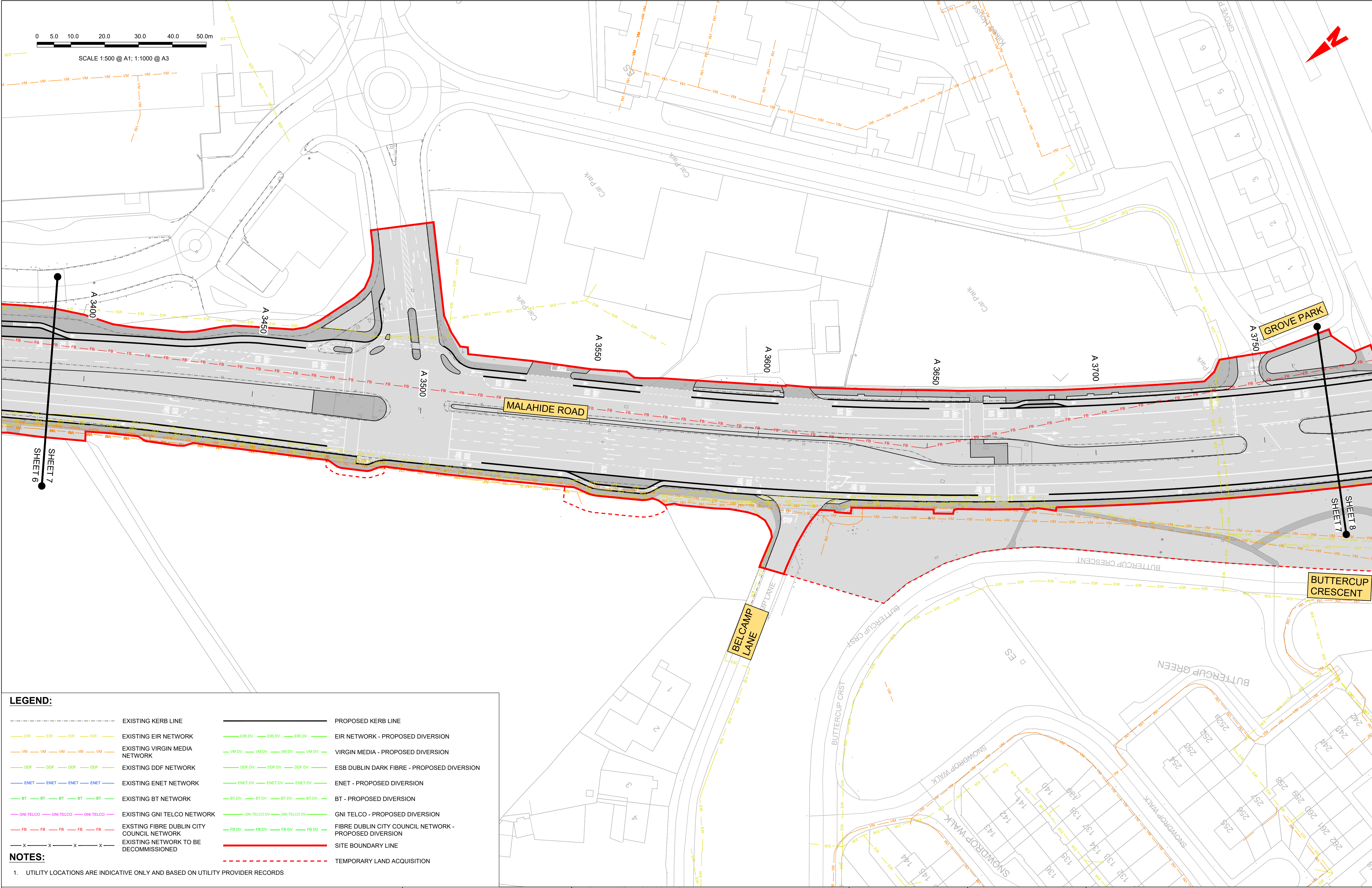
LEGEND:

---	EXISTING KERB LINE	---	PROPOSED KERB LINE
---	EXISTING EIR NETWORK	---	EIR NETWORK - PROPOSED DIVERSION
---	EXISTING VIRGIN MEDIA NETWORK	---	VIRGIN MEDIA - PROPOSED DIVERSION
---	EXISTING DDF NETWORK	---	ESB DUBLIN DARK FIBRE - PROPOSED DIVERSION
---	EXISTING ENET NETWORK	---	ENET - PROPOSED DIVERSION
---	EXISTING BT NETWORK	---	BT - PROPOSED DIVERSION
---	EXISTING GNI TELCO NETWORK	---	GNI TELCO - PROPOSED DIVERSION
---	EXISTING FIBRE DUBLIN CITY COUNCIL NETWORK	---	FIBRE DUBLIN CITY COUNCIL NETWORK - PROPOSED DIVERSION
---	EXISTING NETWORK TO BE DECOMMISSIONED	---	SITE BOUNDARY LINE
---		---	TEMPORARY LAND ACQUISITION

NOTES:

1. UTILITY LOCATIONS ARE INDICATIVE ONLY AND BASED ON UTILITY PROVIDER RECORDS

DO NOT SCALE USE FIGURED DIMENSIONS ONLY



LEGEND:

— EIR — EIR — EIR — EIR —

— VM — VM — VM — VM — VM — VM —

— DDF — DDF — DDF — DDF —

— ENET — ENET — ENET — ENET —

— BT — BT — BT — BT — BT —

— GNI TELCO — GNI TELCO — GNI TELCO —

— FB — FB — FB — FB — FB —

— X — X — X — X — X — X —

EXISTING KERB LINE

EXISTING EIR NETWORK

EXISTING VIRGIN MEDIA NETWORK

EXISTING DDF NETWORK

EXISTING ENET NETWORK

EXISTING BT NETWORK

EXISTING GNI TELCO NETWORK

EXISTING FIBRE DUBLIN CITY COUNCIL NETWORK

EXISTING NETWORK TO BE DECOMMISSIONED

— EIR DV — EIR DV — EIR DV —

— VM DV — VM DV — VM DV — VM DV —

— DDF DV — DDF DV — DDF DV —

— ENET DV — ENET DV — ENET DV —

— BT DV — BT DV — BT DV — BT DV —

— GNI TELCO DV — GNI TELCO DV —

— FB DV — FB DV — FB DV — FB DV —

— SITE BOUNDARY LINE

— TEMPORARY LAND ACQUISITION

PROPOSED KERB LINE

EIR NETWORK - PROPOSED DIVERSION

VIRGIN MEDIA - PROPOSED DIVERSION

ESB DUBLIN DARK FIBRE - PROPOSED DIVERSION

ENET - PROPOSED DIVERSION

BT - PROPOSED DIVERSION

GNI TELCO - PROPOSED DIVERSION

FIBRE DUBLIN CITY COUNCIL NETWORK - PROPOSED DIVERSION

NOTES:
1. UTILITY LOCATIONS ARE INDICATIVE ONLY AND BASED ON UTILITY PROVIDER RECORDS

Disclaimer
a. © National Transport Authority (NTA) 2021. This drawing is confidential and the copyright in it is owned by NTA. This drawing must not be either loaned, copied or otherwise reproduced in whole or in part or used for any purpose without the prior permission of NTA.
b. This drawing is to be used for the design element identified in the titlebox. Other information shown is to be considered indicative only. The drawing is to be read in conjunction with all other relevant design drawings.
c. O.S. data used for plans are printed under © Ordnance Survey Ireland Government of Ireland. All rights reserved. Licence Number 2021/OSI_NMA_180 National Transport Authority. All elevations are in metres and relate to OSI Geoid Model (OSGM15) Mean Head. All Co-ordinates are in Irish Transverse Mercator Grid (ITM) as defined by OSI active local GPS station.
d. Information concerning the position of apparatus shown on this drawing is based on drawings supplied by the utility owners and/or the utility works contractor, whilst every care has been taken in the preparation of this drawing, positions should be taken as approximate and are intended for general guidance only and no representation is made by the NTA as to the accuracy, completeness, sufficiency or otherwise of this drawing and the position of the apparatus. The information contained herein does not purport to be comprehensive or final as the apparatus is subject to being altered and/or superseded. Recipients should not rely on this information. Any liabilities are hereby expressly disclaimed.
e. The information contained herein has been provided by the NTA but does not purport to be comprehensive or final. Recipients should not rely on the information. Neither the NTA nor any of its directors, officers, employees, agents, stakeholders or advisers make any representation or warranty as to, or accept any liability or responsibility in relation to, the adequacy, accuracy, reasonableness or completeness of the information provided as part of this document or any matter on which the information is based (including but not limited to loss or damage arising as a result of reliance by recipients on the information or any part of it). Any liabilities are hereby expressly disclaimed.

<div><div><div><div></div><div>Project Ireland 2040</div><div>Building Ireland's Future</div></div></div></div>						Rev	Date	Drn	Chk'd	App'd	Description
						M01	06/12/21	PP	JH	CA	ISSUE FOR PHASE 4: PLANNING

NTA

Údarás Náisiúnta Iompair

National Transport Authority

Date

06/12/21

Scale

1:500 @ A1
1:1000 @ A3

Project Code

BCIDA

Originator Code

ACM

Engineering Designer

AECOM

M

MOTT MACDONALD

Drawn

P.POCZATKO

Checked

J.HAWE

Approved

C.ACTON

Client

NTA

QMS Code

Programme Title BUSCONNECTS DUBLIN CORE BUS CORRIDORS INFRASTRUCTURE WORKS			
Drawing Title CLONGRIFFIN TO CITY CENTRE CORE BUS CORRIDOR SCHEME TELECOMMUNICATIONS ASSET ALTERATIONS			
Drawing File Name BCIDA-ACM-UTL_UL-0001_XX_00-DR-CU-0007	Sheet Number 07 of 21	Status A	Rev M01

DO NOT SCALE USE FIGURED DIMENSIONS ONLY

LEGEND:

EXISTING KERB LINE

EXISTING EIR NETWORK

EXISTING VIRGIN MEDIA NETWORK

EXISTING DDF NETWORK

EXISTING ENET NETWORK

EXISTING BT NETWORK

EXISTING GNI TELCO NETWORK

EXISTING FIBRE DUBLIN CITY COUNCIL NETWORK

EXISTING NETWORK TO BE DECOMMISSIONED

PROPOSED KERB LINE

EIR NETWORK - PROPOSED DIVERSION

VIRGIN MEDIA - PROPOSED DIVERSION

ESB DUBLIN DARK FIBRE - PROPOSED DIVERSION

ENET - PROPOSED DIVERSION

BT - PROPOSED DIVERSION

GNI TELCO - PROPOSED DIVERSION

FIBRE DUBLIN CITY COUNCIL NETWORK - PROPOSED DIVERSION

SITE BOUNDARY LINE

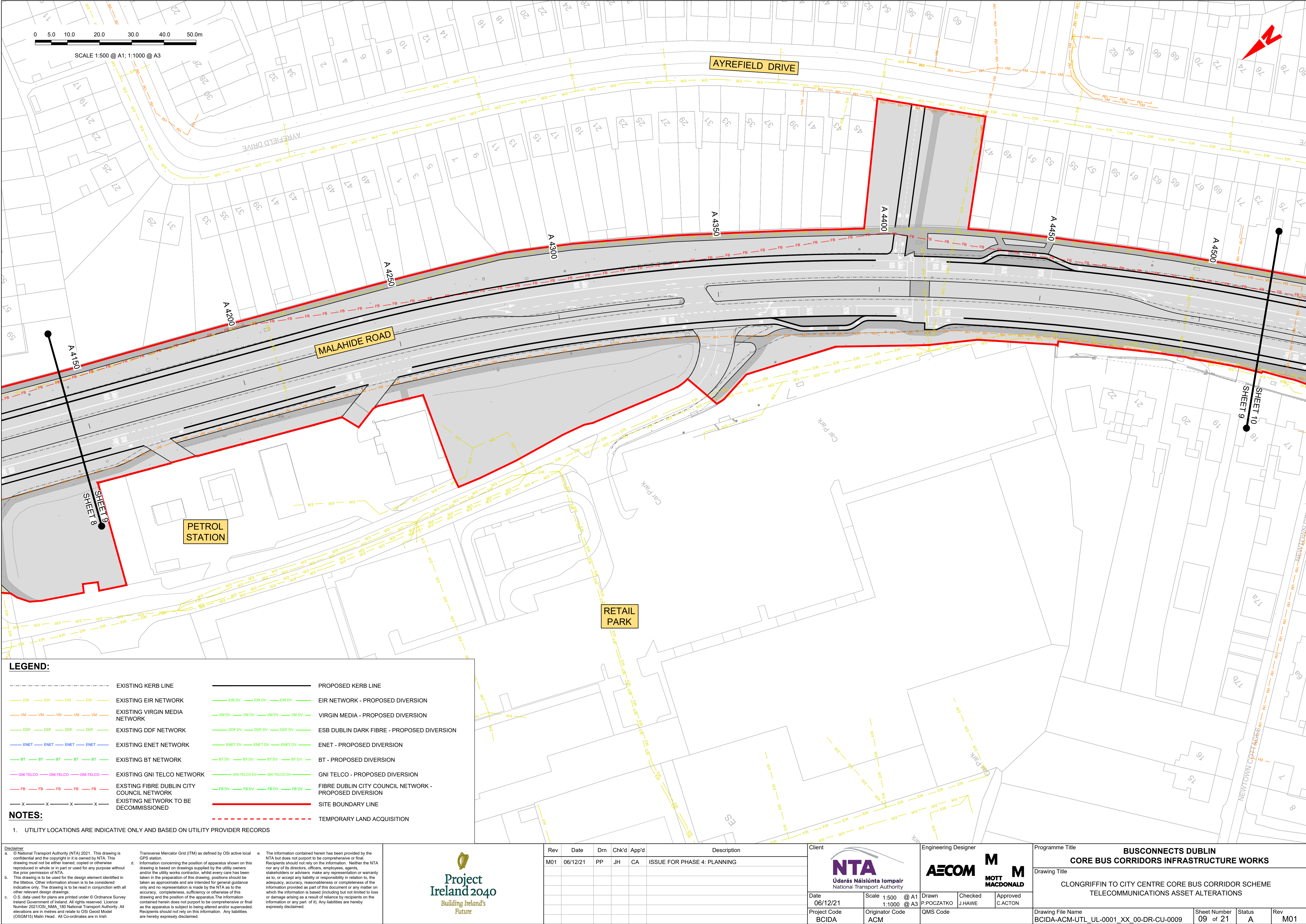
TEMPORARY LAND ACQUISITION

NOTES:

1. UTILITY LOCATIONS ARE INDICATIVE ONLY AND BASED ON UTILITY PROVIDER RECORDS

<div><div><div><div>Disclaimer</div><div><div>a. © National Transport Authority (NTA) 2021. This drawing is confidential and the copyright in it is owned by NTA. This drawing must not be either loaned, copied or otherwise reproduced in whole or in part or used for any purpose without the prior permission of NTA.</div><div>b. This drawing is to be used for the design element identified in the titleblock. Other information shown is to be considered indicative only. The drawing is to be read in conjunction with all other relevant design drawings.</div><div>c. O.S. data used for plans are printed under © Ordnance Survey Ireland Government of Ireland. All rights reserved. Licence Number 2021/OSI_NMA_180 National Transport Authority. All elevations are in metres and relate to OSI Geoid Model (OSGM15) Mean Head. All Co-ordinates are in Irish</div></div><div><div>d. Transverse Mercator Grid (ITM) as defined by OSI active local GPS station.</div><div>e. The information contained herein has been provided by the NTA but does not purport to be comprehensive or final. Recipients should not rely on the information. Neither the NTA nor any of its directors, officers, employees, agents, stakeholders or advisers make any representation or warranty as to, or accept any liability or responsibility in relation to, the adequacy, accuracy, reasonableness or completeness of the information provided as part of this document or any matter on which the information is based (including but not limited to loss or damage arising as a result of reliance by recipients on the information or any part of it). Any liabilities are hereby expressly disclaimed.</div></div></div></div><div><div><div><div><div><div><div></div><div></div></div><div>Project Ireland 2040</div><div>Building Ireland's Future</div></div></div></div></div></div><tr><td colspan="2"><table><tr><th>Rev</th><th>Date</th><th>Drm</th><th>Chk'd</th><th>App'd</th><th>Description</th></tr><tr><td>M01</td><td>06/12/21</td><td>PP</td><td>JH</td><td>CA</td><td>ISSUE FOR PHASE 4: PLANNING</td></tr></table></td><td><div><div><div><div>NTA</div><div>Udarás Náisiúnta Iompair</div><div>National Transport Authority</div></div></div></div></td><td><div><div><div><div>Engineering Designer</div><div><div><div><div>AECOM</div><div>MOTT MACDONALD</div></div></div></div></div></div></div></td><td><div><div><div><div>Programme Title</div><div>BUSCONNECTS DUBLIN CORE BUS CORRIDORS INFRASTRUCTURE WORKS</div></div><div><div><div><div>Drawing Title</div><div>CLONGRIFFIN TO CITY CENTRE CORE BUS CORRIDOR SCHEME TELECOMMUNICATIONS ASSET ALTERATIONS</div></div></div></div></div></div></td></tr><tr><td colspan="2"><table><tr><td>Date</td><td>06/12/21</td><td>Scale</td><td>1:500 @ A1 1:1000 @ A3</td><td>Drawn</td><td>P.POCZATKO</td><td>Checked</td><td>J.HAWE</td><td>Approved</td><td>C.ACTON</td></tr><tr><td>Project Code</td><td>BCIDA</td><td>Originator Code</td><td>ACM</td><td>QMS Code</td><td colspan="4"></td></tr></table></td><td colspan="2"><table><tr><td>Drawing File Name</td><td>BCIDA-ACM-UTL_UL-0001_XX_00-DR-CU-0008</td><td>Sheet Number</td><td>08 of 21</td><td>Status</td><td>A</td><td>Rev</td><td>M01</td></tr></table></td></tr></div>	<table><tr><th>Rev</th><th>Date</th><th>Drm</th><th>Chk'd</th><th>App'd</th><th>Description</th></tr><tr><td>M01</td><td>06/12/21</td><td>PP</td><td>JH</td><td>CA</td><td>ISSUE FOR PHASE 4: PLANNING</td></tr></table>		Rev	Date	Drm	Chk'd	App'd	Description	M01	06/12/21	PP	JH	CA	ISSUE FOR PHASE 4: PLANNING	<div><div><div><div>NTA</div><div>Udarás Náisiúnta Iompair</div><div>National Transport Authority</div></div></div></div>	<div><div><div><div>Engineering Designer</div><div><div><div><div>AECOM</div><div>MOTT MACDONALD</div></div></div></div></div></div></div>	<div><div><div><div>Programme Title</div><div>BUSCONNECTS DUBLIN CORE BUS CORRIDORS INFRASTRUCTURE WORKS</div></div><div><div><div><div>Drawing Title</div><div>CLONGRIFFIN TO CITY CENTRE CORE BUS CORRIDOR SCHEME TELECOMMUNICATIONS ASSET ALTERATIONS</div></div></div></div></div></div>	<table><tr><td>Date</td><td>06/12/21</td><td>Scale</td><td>1:500 @ A1 1:1000 @ A3</td><td>Drawn</td><td>P.POCZATKO</td><td>Checked</td><td>J.HAWE</td><td>Approved</td><td>C.ACTON</td></tr><tr><td>Project Code</td><td>BCIDA</td><td>Originator Code</td><td>ACM</td><td>QMS Code</td><td colspan="4"></td></tr></table>		Date	06/12/21	Scale	1:500 @ A1 1:1000 @ A3	Drawn	P.POCZATKO	Checked	J.HAWE	Approved	C.ACTON	Project Code	BCIDA	Originator Code	ACM	QMS Code					<table><tr><td>Drawing File Name</td><td>BCIDA-ACM-UTL_UL-0001_XX_00-DR-CU-0008</td><td>Sheet Number</td><td>08 of 21</td><td>Status</td><td>A</td><td>Rev</td><td>M01</td></tr></table>		Drawing File Name	BCIDA-ACM-UTL_UL-0001_XX_00-DR-CU-0008	Sheet Number	08 of 21	Status	A	Rev	M01
<table><tr><th>Rev</th><th>Date</th><th>Drm</th><th>Chk'd</th><th>App'd</th><th>Description</th></tr><tr><td>M01</td><td>06/12/21</td><td>PP</td><td>JH</td><td>CA</td><td>ISSUE FOR PHASE 4: PLANNING</td></tr></table>		Rev	Date	Drm	Chk'd	App'd	Description	M01	06/12/21	PP	JH	CA	ISSUE FOR PHASE 4: PLANNING	<div><div><div><div>NTA</div><div>Udarás Náisiúnta Iompair</div><div>National Transport Authority</div></div></div></div>	<div><div><div><div>Engineering Designer</div><div><div><div><div>AECOM</div><div>MOTT MACDONALD</div></div></div></div></div></div></div>	<div><div><div><div>Programme Title</div><div>BUSCONNECTS DUBLIN CORE BUS CORRIDORS INFRASTRUCTURE WORKS</div></div><div><div><div><div>Drawing Title</div><div>CLONGRIFFIN TO CITY CENTRE CORE BUS CORRIDOR SCHEME TELECOMMUNICATIONS ASSET ALTERATIONS</div></div></div></div></div></div>																																
Rev	Date	Drm	Chk'd	App'd	Description																																											
M01	06/12/21	PP	JH	CA	ISSUE FOR PHASE 4: PLANNING																																											
<table><tr><td>Date</td><td>06/12/21</td><td>Scale</td><td>1:500 @ A1 1:1000 @ A3</td><td>Drawn</td><td>P.POCZATKO</td><td>Checked</td><td>J.HAWE</td><td>Approved</td><td>C.ACTON</td></tr><tr><td>Project Code</td><td>BCIDA</td><td>Originator Code</td><td>ACM</td><td>QMS Code</td><td colspan="4"></td></tr></table>		Date	06/12/21	Scale	1:500 @ A1 1:1000 @ A3	Drawn	P.POCZATKO	Checked	J.HAWE	Approved	C.ACTON	Project Code	BCIDA	Originator Code	ACM	QMS Code					<table><tr><td>Drawing File Name</td><td>BCIDA-ACM-UTL_UL-0001_XX_00-DR-CU-0008</td><td>Sheet Number</td><td>08 of 21</td><td>Status</td><td>A</td><td>Rev</td><td>M01</td></tr></table>		Drawing File Name	BCIDA-ACM-UTL_UL-0001_XX_00-DR-CU-0008	Sheet Number	08 of 21	Status	A	Rev	M01																		
Date	06/12/21	Scale	1:500 @ A1 1:1000 @ A3	Drawn	P.POCZATKO	Checked	J.HAWE	Approved	C.ACTON																																							
Project Code	BCIDA	Originator Code	ACM	QMS Code																																												
Drawing File Name	BCIDA-ACM-UTL_UL-0001_XX_00-DR-CU-0008	Sheet Number	08 of 21	Status	A	Rev	M01																																									

DO NOT SCALE USE FIGURED DIMENSIONS ONLY



LEGEND:

EXISTING KERB LINE

EXISTING EIR NETWORK

EXISTING VIRGIN MEDIA NETWORK

EXISTING DDF NETWORK

EXISTING ENET NETWORK

EXISTING BT NETWORK

EXISTING GNI TELCO NETWORK

EXISTING FIBRE DUBLIN CITY COUNCIL NETWORK

EXISTING NETWORK TO BE DECOMMISSIONED

PROPOSED KERB LINE

EIR NETWORK - PROPOSED DIVERSION

VIRGIN MEDIA - PROPOSED DIVERSION

ESB DUBLIN DARK FIBRE - PROPOSED DIVERSION

ENET - PROPOSED DIVERSION

BT - PROPOSED DIVERSION

GNI TELCO - PROPOSED DIVERSION

FIBRE DUBLIN CITY COUNCIL NETWORK - PROPOSED DIVERSION

SITE BOUNDARY LINE

TEMPORARY LAND ACQUISITION

NOTES:

1. UTILITY LOCATIONS ARE INDICATIVE ONLY AND BASED ON UTILITY PROVIDER RECORDS

Disclaimer

a. © National Transport Authority (NTA) 2021. This drawing is confidential and the copyright in it is owned by NTA. This drawing must not be either loaned, copied or otherwise reproduced in whole or in part or used for any purpose without the prior permission of NTA.

b. This drawing is to be used for the design element identified in the titleblock. Other information shown is to be considered indicative only. The drawing is to be read in conjunction with all other relevant design drawings.

c. O.S. data used for plans are printed under © Ordnance Survey Ireland Government of Ireland. All rights reserved. Licence Number 2021/OSI_NMA_180 National Transport Authority. All elevations are in metres and relate to OSI Geoid Model (OSGM15) Malin Head. All Co-ordinates are in Irish Transverse Mercator Grid (ITM) as defined by OSI active local GPS station.

d. Information concerning the position of apparatus shown on this drawing is based on drawings supplied by the utility owners and/or the utility works contractor, whilst every care has been taken in the preparation of this drawing, positions should be taken as approximate and are intended for general guidance only and no representation is made by the NTA as to the accuracy, completeness, sufficiency or otherwise of this drawing and the position of the apparatus. The information contained herein does not purport to be comprehensive or final as the apparatus is subject to being altered and/or superseded. Recipients should not rely on this information. Any liabilities are hereby expressly disclaimed.

e. The information contained herein has been provided by the NTA but does not purport to be comprehensive or final. Recipients should not rely on the information. Neither the NTA nor any of its directors, officers, employees, agents, stakeholders or advisers make any representation or warranty as to, or accept any liability or responsibility in relation to, the adequacy, accuracy, reasonableness or completeness of the information provided as part of this document or any matter on which the information is based (including but not limited to loss or damage arising as a result of reliance by recipients on the information or any part of it). Any liabilities are hereby expressly disclaimed.

<div><div></div><div>Building Ireland's Future</div></div>						
Rev	Date	Dwn	Chk'd	App'd	Description	
M01	06/12/21	PP	JH	CA	ISSUE FOR PHASE 4: PLANNING	

Udarás Náisiúnta Iompair
National Transport Authority

Date
06/12/21

Scale
1:500 @ A1
1:1000 @ A3

Drawn
P.POCZATKO

Checked
J.HAWE

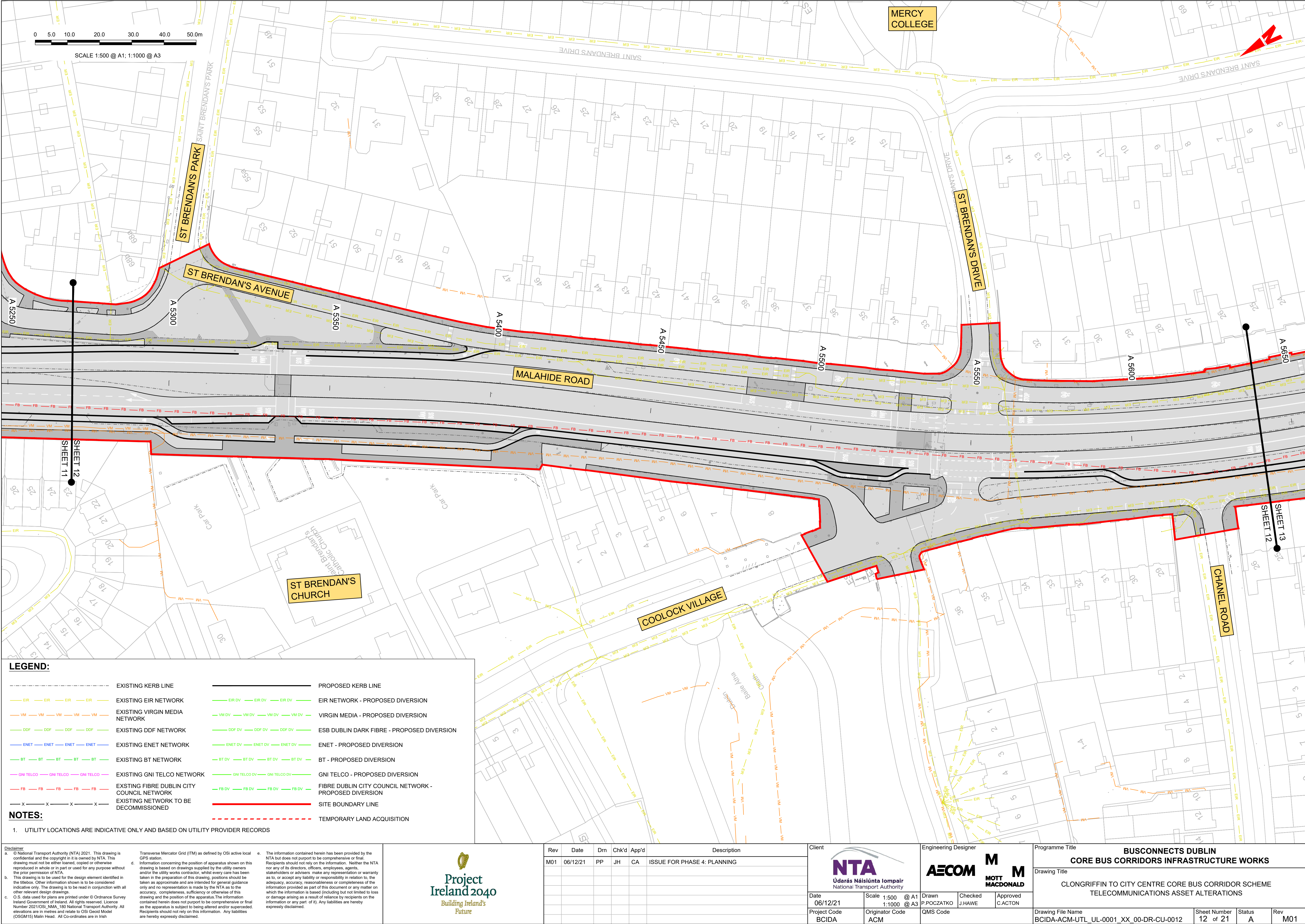
Approved
C.ACTON

Project Code
BCIDA

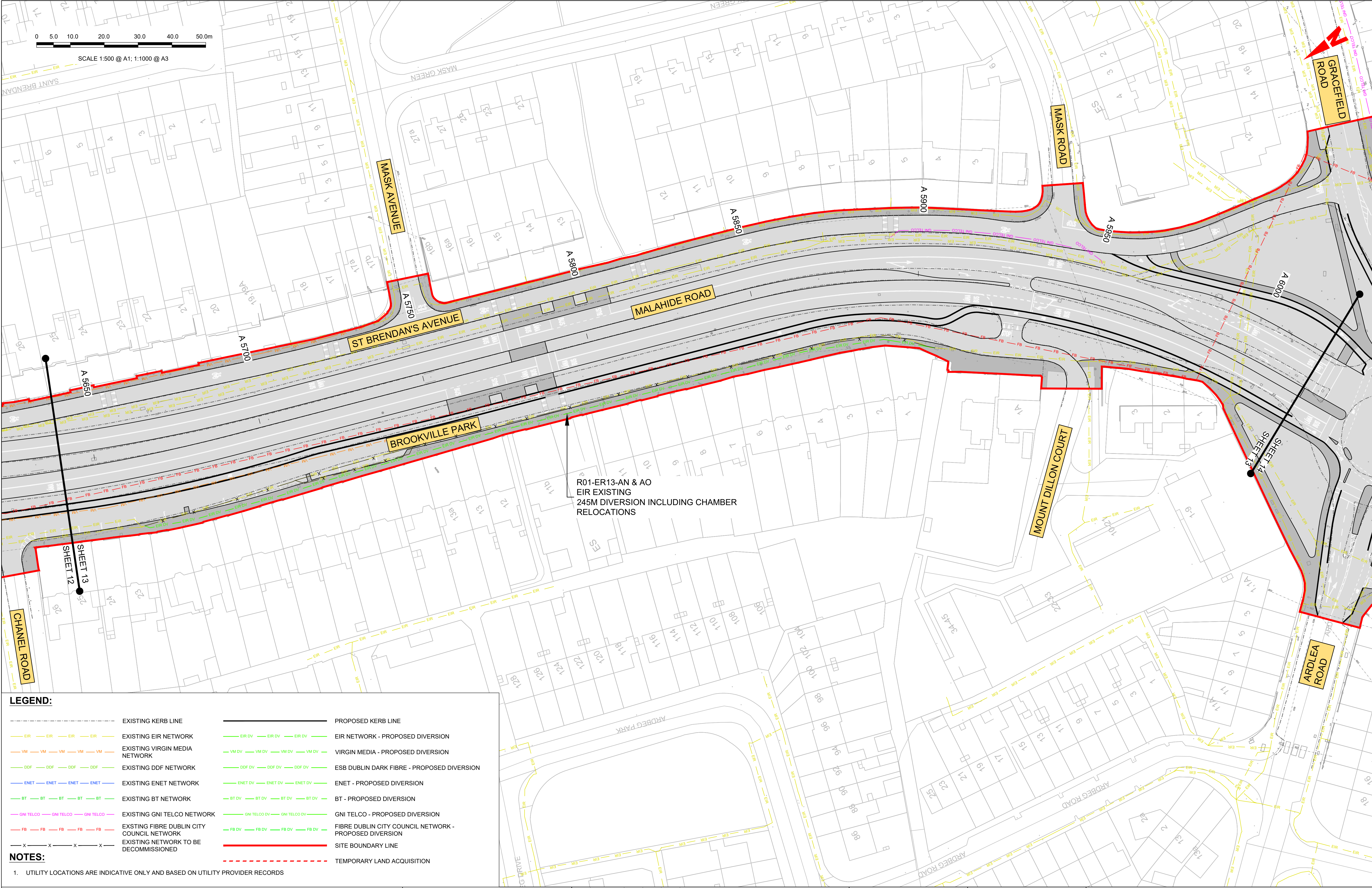
Originator Code
ACM

QMS Code

BUSCONNECTS DUBLIN CORE BUS CORRIDORS INFRASTRUCTURE WORKS				
Drawing Title CLONGRIFFIN TO CITY CENTRE CORE BUS CORRIDOR SCHEME TELECOMMUNICATIONS ASSET ALTERATIONS				
Drawing File Name BCIDA-ACM-UTL_UL-0001_XX_00-DR-CU-0009	Sheet Number 09 of 21	Status A	Rev M01	



C:\Users\poc3666\OneDrive - Mott MacDonald\Desktop\TELBCIDA-ACM-UTL_UL-0001_XX_00-DR-CU-0012.dwg



LEGEND:

— EIR — EIR — EIR — EIR —

— VM — VM — VM — VM —

— DDF — DDF — DDF — DDF —

— ENET — ENET — ENET — ENET —

— BT — BT — BT — BT —

— GNI TELCO — GNI TELCO — GNI TELCO —

— FB — FB — FB — FB —

— X — X — X — X —

EXISTING KERB LINE

EXISTING EIR NETWORK

EXISTING VIRGIN MEDIA NETWORK

EXISTING DDF NETWORK

EXISTING ENET NETWORK

EXISTING BT NETWORK

EXISTING GNI TELCO NETWORK

EXISTING FIBRE DUBLIN CITY COUNCIL NETWORK

EXISTING NETWORK TO BE DECOMMISSIONED

— EIR DV — EIR DV — EIR DV —

— VM DV — VM DV — VM DV —

— DDF DV — DDF DV — DDF DV —

— ENET DV — ENET DV — ENET DV —

— BT DV — BT DV — BT DV —

— GNI TELCO DV — GNI TELCO DV —

— FB DV — FB DV — FB DV —

— — — — —

PROPOSED KERB LINE

EIR NETWORK - PROPOSED DIVERSION

VIRGIN MEDIA - PROPOSED DIVERSION

ESB DUBLIN DARK FIBRE - PROPOSED DIVERSION

ENET - PROPOSED DIVERSION

BT - PROPOSED DIVERSION

GNI TELCO - PROPOSED DIVERSION

FIBRE DUBLIN CITY COUNCIL NETWORK - PROPOSED DIVERSION

SITE BOUNDARY LINE

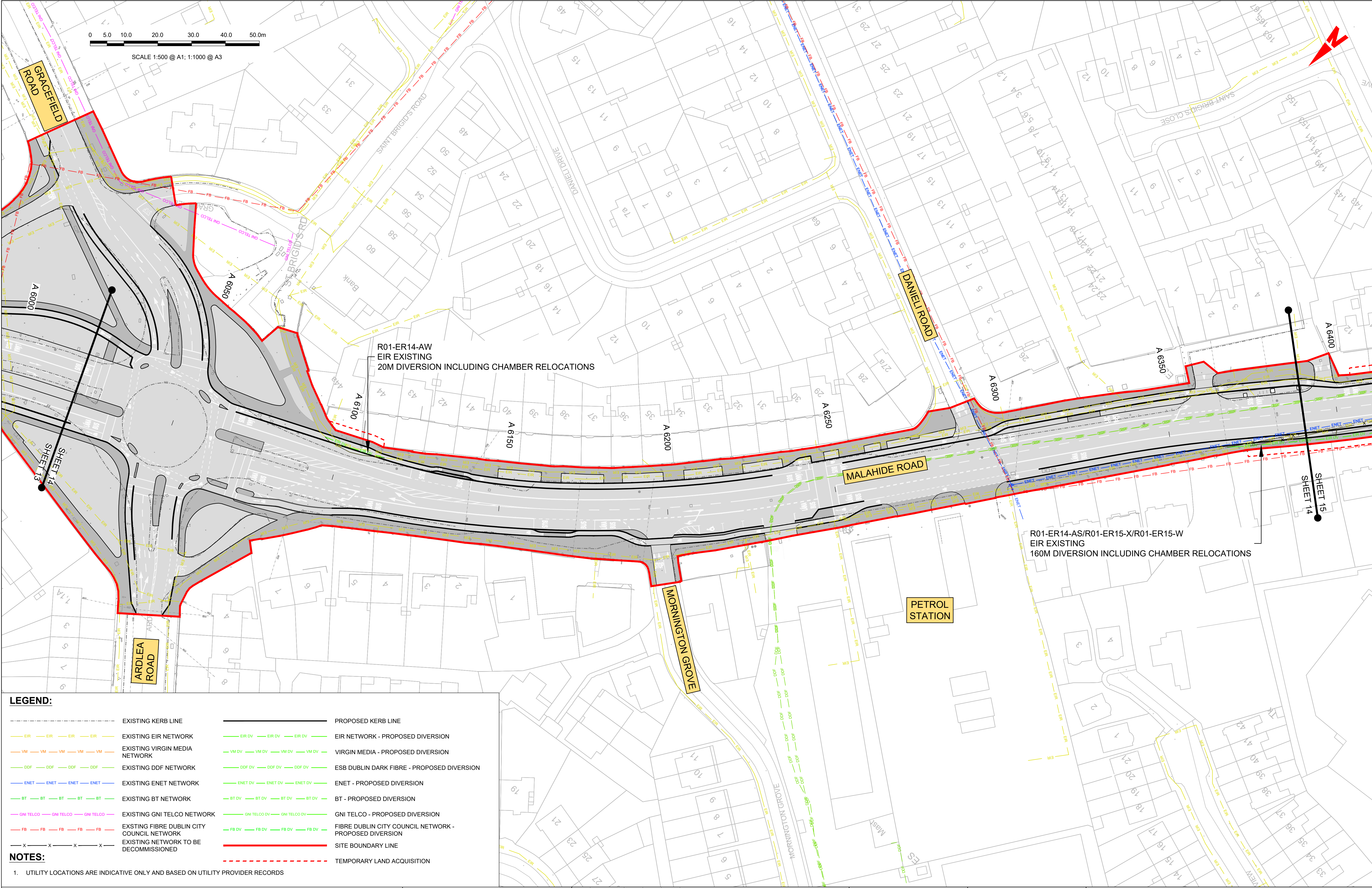
TEMPORARY LAND ACQUISITION

NOTES:

1. UTILITY LOCATIONS ARE INDICATIVE ONLY AND BASED ON UTILITY PROVIDER RECORDS

<div>Disclaimer</div> <div>a. © National Transport Authority (NTA) 2021. This drawing is confidential and the copyright in it is owned by NTA. This drawing must not be either loaned, copied or otherwise reproduced in whole or in part or used for any purpose without the prior permission of NTA.</div> <div>b. This drawing is to be used for the design element identified in the titleblock. Other information shown is to be considered indicative only. The drawing is to be read in conjunction with all other relevant design drawings.</div> <div>c. O.S. data used for plans are printed under © Ordnance Survey Ireland Government of Ireland. All rights reserved. Licence Number 2021/OSI_NMA_180 National Transport Authority. All elevations are in metres and relate to OSI Geoid Model (OSGM15) Mean Head. All Co-ordinates are in Irish</div>		<div>Transverse Mercator Grid (ITM) as defined by OSI active local GPS station.</div> <div>d. Information concerning the position of apparatus shown on this drawing is based on drawings supplied by the utility owners and/or the utility works contractor, whilst every care has been taken in the preparation of this drawing, positions should be taken as approximate and are intended for general guidance only and no representation is made by the NTA as to the accuracy, completeness, sufficiency or otherwise of this drawing and the position of the apparatus. The information contained herein does not purport to be comprehensive or final as the apparatus is subject to being altered and/or superceded. Recipients should not rely on this information. Any liabilities are hereby expressly disclaimed.</div>		<div>e. The information contained herein has been provided by the NTA but does not purport to be comprehensive or final. Recipients should not rely on the information. Neither the NTA nor any of its directors, officers, employees, agents, stakeholders or advisers make any representation or warranty as to, or accept any liability or responsibility in relation to, the adequacy, accuracy, reasonableness or completeness of the information provided as part of this document or any matter on which the information is based (including but not limited to loss or damage arising as a result of reliance by recipients on the information or any part of it). Any liabilities are hereby expressly disclaimed.</div>		<div><div><div><div><div><div></div><div>Project Ireland 2040</div><div>Building Ireland's Future</div></div></div><div><div>Rev</div><div>Date</div><div>Drn</div><div>Chk'd</div><div>App'd</div><div>Description</div></div><div><div>M01</div><div>06/12/21</div><div>PP</div><div>JH</div><div>CA</div><div>ISSUE FOR PHASE 4: PLANNING</div></div></div></div></div>		<div>Client</div> <div><div><div><div><div></div><div>NTA</div><div>Údarás Náisiúnta Iompair</div><div>National Transport Authority</div></div></div><div><div>Date</div><div>06/12/21</div></div><div><div>Scale</div><div>1:500 @ A1 1:1000 @ A3</div></div><div><div>Drawn</div><div>P.POCZATKO</div></div><div><div>Checked</div><div>J.HAWE</div></div><div><div>Approved</div><div>C.ACTON</div></div><div><div>Project Code</div><div>BCIDA</div></div><div><div>Originator Code</div><div>ACM</div></div><div><div>QMS Code</div><div></div></div></div></div>		<div>Engineering Designer</div> <div><div><div><div><div></div><div>AECOM</div></div><div><div>MOTT MACDONALD</div></div></div></div></div>		<div>Programme Title</div> <div>BUSCONNECTS DUBLIN</div> <div>CORE BUS CORRIDORS INFRASTRUCTURE WORKS</div> <div><div>Drawing Title</div><div>CLONGRIFFIN TO CITY CENTRE CORE BUS CORRIDOR SCHEME TELECOMMUNICATIONS ASSET ALTERATIONS</div></div> <div><div>Drawing File Name</div><div>BCIDA-ACM-UTL_UL-0001_XX_00-DR-CU-0013</div></div> <div><div>Sheet Number</div><div>13 of 21</div></div> <div><div>Status</div><div>A</div></div> <div><div>Rev</div><div>M01</div></div>			
---	--	---	--	---	--	--	--	--	--	---	--	--	--	--	--

DO NOT SCALE USE FIGURED DIMENSIONS ONLY



LEGEND:

EXISTING KERB LINE

EXISTING EIR NETWORK

EXISTING VIRGIN MEDIA NETWORK

EXISTING DDF NETWORK

EXISTING ENET NETWORK

EXISTING BT NETWORK

EXISTING GNI TELCO NETWORK

EXISTING FIBRE DUBLIN CITY COUNCIL NETWORK

EXISTING NETWORK TO BE DECOMMISSIONED

PROPOSED KERB LINE

EIR NETWORK - PROPOSED DIVERSION

VIRGIN MEDIA - PROPOSED DIVERSION

ESB DUBLIN DARK FIBRE - PROPOSED DIVERSION

ENET - PROPOSED DIVERSION

BT - PROPOSED DIVERSION

GNI TELCO - PROPOSED DIVERSION

FIBRE DUBLIN CITY COUNCIL NETWORK - PROPOSED DIVERSION

SITE BOUNDARY LINE

TEMPORARY LAND ACQUISITION

NOTES:

1. UTILITY LOCATIONS ARE INDICATIVE ONLY AND BASED ON UTILITY PROVIDER RECORDS

Disclaimer
a. © National Transport Authority (NTA) 2021. This drawing is confidential and the copyright in it is owned by NTA. This drawing must not be either loaned, copied or otherwise reproduced in whole or in part or used for any purpose without the prior permission of NTA.
b. This drawing is to be used for the design element identified in the titlebox. Other information shown is to be considered indicative only. The drawing is to be read in conjunction with all other relevant design drawings.
c. O.S. data used for plans are printed under © Ordnance Survey Ireland Government of Ireland. All rights reserved. Licence Number 2021/OSI_NMA_180 National Transport Authority. All elevations are in metres and relate to OSI Geoid Model (OSGM15) Mean Head. All Co-ordinates are in Irish Transverse Mercator Grid (ITM) as defined by OSI active local GPS station.
d. Information concerning the position of apparatus shown on this drawing is based on drawings supplied by the utility owners and/or the utility works contractor, whilst every care has been taken in the preparation of this drawing, positions should be taken as approximate and are intended for general guidance only and no representation is made by the NTA as to the accuracy, completeness, sufficiency or otherwise of this drawing and the position of the apparatus. The information contained herein does not purport to be comprehensive or final as the apparatus is subject to being altered and/or superseded. Recipients should not rely on this information. Any liabilities are hereby expressly disclaimed.
e. The information contained herein has been provided by the NTA but does not purport to be comprehensive or final. Recipients should not rely on the information. Neither the NTA nor any of its directors, officers, employees, agents, stakeholders or advisers make any representation or warranty as to, or accept any liability or responsibility in relation to, the adequacy, accuracy, reasonableness or completeness of the information provided as part of this document or any matter on which the information is based (including but not limited to loss or damage arising as a result of reliance by recipients on the information or any part of it). Any liabilities are hereby expressly disclaimed.

Rev	Date	Drm	Chk'd	App'd	Description
M01	06/12/21	PP	JH	CA	ISSUE FOR PHASE 4: PLANNING

Client

Udarás Náisiúnta Iompair
National Transport Authority

Engineering Designer

MOTT MACDONALD

Date
06/12/21

Scale
1:500 @ A1
1:1000 @ A3

Drawn
P.POCZATKO

Checked
J.HAWE

Approved
C.ACTON

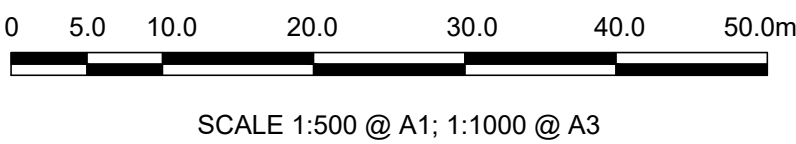
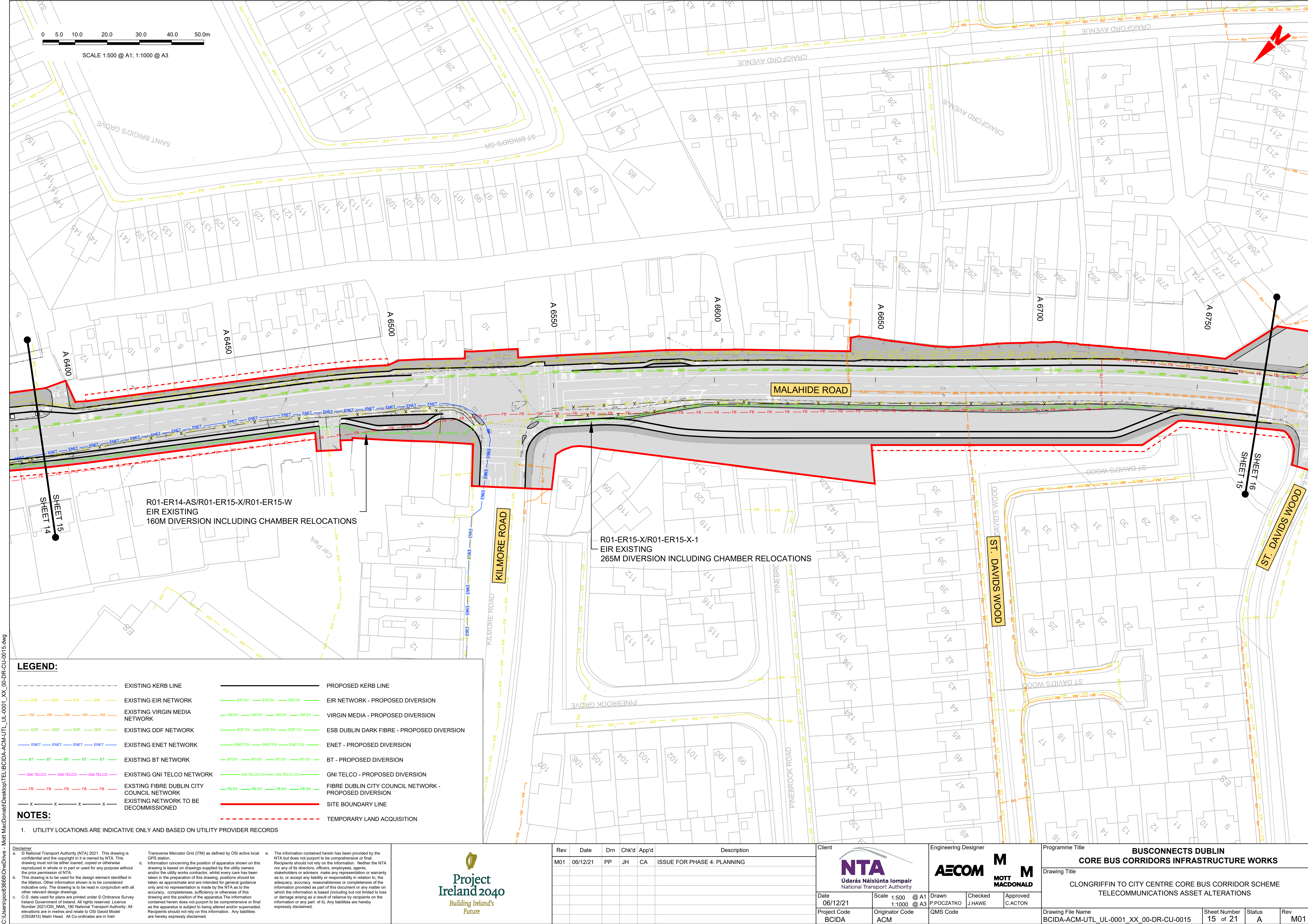
Project Code
BCIDA

Originator Code
ACM

QMS Code

Programme Title BUSCONNECTS DUBLIN CORE BUS CORRIDORS INFRASTRUCTURE WORKS			
Drawing Title CLONGRIFFIN TO CITY CENTRE CORE BUS CORRIDOR SCHEME TELECOMMUNICATIONS ASSET ALTERATIONS			
Drawing File Name BCIDA-ACM-UTL_UL-0001_XX_00-DR-CU-0014	Sheet Number 14 of 21	Status A	Rev M01

DO NOT SCALE USE FIGURED DIMENSIONS ONLY



LEGEND:

	EXISTING KERB LINE		PROPOSED KERB LINE
	EXISTING EIR NETWORK		EIR NETWORK - PROPOSED DIVERSION
	EXISTING VIRGIN MEDIA NETWORK		VIRGIN MEDIA - PROPOSED DIVERSION
	EXISTING DDF NETWORK		ESB DUBLIN DARK FIBRE - PROPOSED DIVERSION
	EXISTING ENET NETWORK		ENET - PROPOSED DIVERSION
	EXISTING BT NETWORK		BT - PROPOSED DIVERSION
	EXISTING GNI TELCO NETWORK		GNI TELCO - PROPOSED DIVERSION
	EXISTING FIBRE DUBLIN CITY COUNCIL NETWORK		FIBRE DUBLIN CITY COUNCIL NETWORK - PROPOSED DIVERSION
	EXISTING NETWORK TO BE DECOMMISSIONED		SITE BOUNDARY LINE
			TEMPORARY LAND ACQUISITION

NOTES:

1. UTILITY LOCATIONS ARE INDICATIVE ONLY AND BASED ON UTILITY PROVIDER RECORDS

Disclaimer
a. © National Transport Authority (NTA) 2021. This drawing is confidential and the copyright in it is owned by NTA. This drawing must not be either loaned, copied or otherwise reproduced in whole or in part or used for any purpose without the prior permission of NTA.
b. This drawing is to be used for the design element identified in the titlebox. Other information shown is to be considered indicative only. The drawing is to be read in conjunction with all other relevant design drawings.
c. O.S. data used for plans are printed under © Ordnance Survey Ireland Government of Ireland. All rights reserved. Licence Number 2021/OSI, NMA, 180 National Transport Authority. All elevations are in metres and relate to OSI Geoid Model (OSGM15) Malin Head. All Co-ordinates are in Irish Transverse Mercator Grid (ITM) as defined by OSI active local GPS station.
d. Information concerning the position of apparatus shown on this drawing is based on drawings supplied by the utility owners and/or the utility works contractor, whilst every care has been taken as to, or accept any liability or responsibility in relation to, the adequacy, accuracy, reasonableness or completeness of the information provided as part of this document or any matter on which the information is based (including but not limited to loss or damage arising as a result of reliance by recipients on the information or any part of it). Any liabilities are hereby expressly disclaimed.
e. The information contained herein has been provided by the NTA but does not purport to be comprehensive or final. Recipients should not rely on the information. Neither the NTA nor any of its directors, officers, employees, agents, stakeholders or advisers make any representation or warranty as to, or accept any liability or responsibility in relation to, the adequacy, accuracy, reasonableness or completeness of the information provided as part of this document or any matter on which the information is based (including but not limited to loss or damage arising as a result of reliance by recipients on the information or any part of it). Any liabilities are hereby expressly disclaimed.



Rev	Date	Drn	Chk'd	App'd	Description
M01	06/12/21	PP	JH	CA	ISSUE FOR PHASE 4: PLANNING

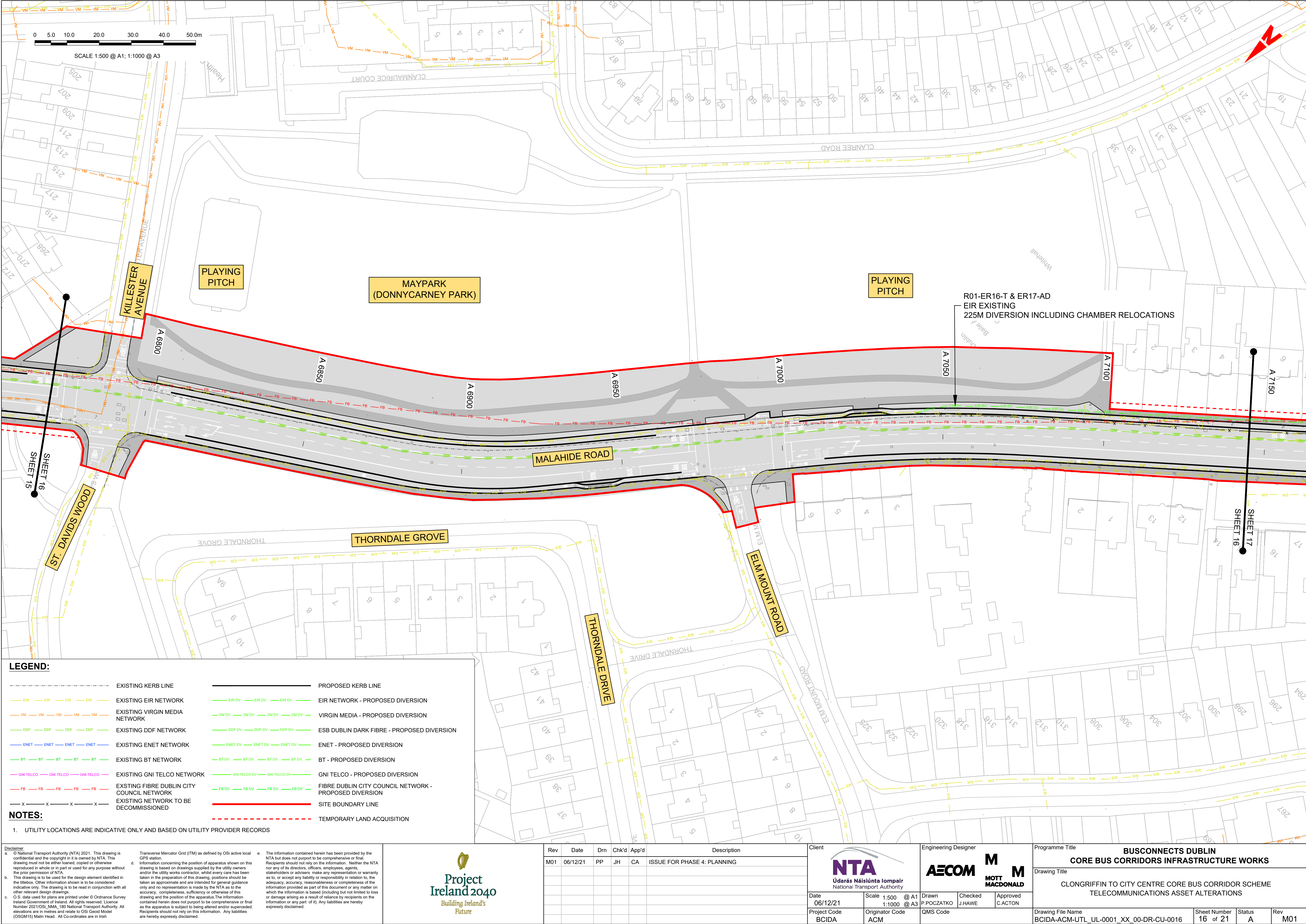
Client	
 Udarás Náisiúnta Iompair National Transport Authority	
Date	Scale
06/12/21	1:500 @ A1 1:1000 @ A3
Project Code	Originator Code
BCIDA	ACM

Engineering Designer	
 MOTT MACDONALD	
Drawn	Checked
P.POCZATKO	J.HAWE
Approved	C.ACTON
QMS Code	

Programme Title			
BUSCONNECTS DUBLIN CORE BUS CORRIDORS INFRASTRUCTURE WORKS			
Drawing Title			
CLONGRIFFIN TO CITY CENTRE CORE BUS CORRIDOR SCHEME TELECOMMUNICATIONS ASSET ALTERATIONS			
Drawing File Name	Sheet Number	Status	Rev
BCIDA-ACM-UTL_UL-0001_XX_00-DR-CU-0015	15 of 21	A	M01

DO NOT SCALE USE FIGURED DIMENSIONS ONLY

C:\Users\poc3366\OneDrive - Mott MacDonald\Desktop\TELBCIDA-ACM-UTL_UL-0001_XX_00-DR-CU-0016.dwg



LEGEND:

EXISTING KERB LINE

EXISTING EIR NETWORK

EXISTING VIRGIN MEDIA NETWORK

EXISTING DDF NETWORK

EXISTING ENET NETWORK

EXISTING BT NETWORK

EXISTING GNI TELCO NETWORK

EXISTING FIBRE DUBLIN CITY COUNCIL NETWORK

EXISTING NETWORK TO BE DECOMMISSIONED

PROPOSED KERB LINE

EIR NETWORK - PROPOSED DIVERSION

VIRGIN MEDIA - PROPOSED DIVERSION

ESB DUBLIN DARK FIBRE - PROPOSED DIVERSION

ENET - PROPOSED DIVERSION

BT - PROPOSED DIVERSION

GNI TELCO - PROPOSED DIVERSION

FIBRE DUBLIN CITY COUNCIL NETWORK - PROPOSED DIVERSION

SITE BOUNDARY LINE

TEMPORARY LAND ACQUISITION

NOTES:

1. UTILITY LOCATIONS ARE INDICATIVE ONLY AND BASED ON UTILITY PROVIDER RECORDS

Disclaimer
a. © National Transport Authority (NTA) 2021. This drawing is confidential and the copyright in it is owned by NTA. This drawing must not be either loaned, copied or otherwise reproduced in whole or in part or used for any purpose without the prior permission of NTA.
b. This drawing is to be used for the design element identified in the titleblock. Other information shown is to be considered indicative only. The drawing is to be read in conjunction with all other relevant design drawings.
c. O.S. data used for plans are printed under © Ordnance Survey Ireland Government of Ireland. All rights reserved. Licence Number 2021/OSI_NMA_180 National Transport Authority. All elevations are in metres and relate to OSI Geoid Model (OSGM15) Mean Head. All Co-ordinates are in Irish Transverse Mercator Grid (ITM) as defined by OSI active local GPS station.
d. Information concerning the position of apparatus shown on this drawing is based on drawings supplied by the utility owners and/or the utility works contractor, whilst every care has been taken in the preparation of this drawing, positions should be taken as approximate and are intended for general guidance only and no representation is made by the NTA as to the accuracy, completeness, sufficiency or otherwise of this drawing and the position of the apparatus. The information contained herein does not purport to be comprehensive or final as the apparatus is subject to being altered and/or superceded. Recipients should not rely on this information. Any liabilities are hereby expressly disclaimed.
e. The information contained herein has been provided by the NTA but does not purport to be comprehensive or final. Recipients should not rely on the information. Neither the NTA nor any of its directors, officers, employees, agents, stakeholders or advisers make any representation or warranty as to, or accept any liability or responsibility in relation to, the adequacy, accuracy, reasonableness or completeness of the information provided as part of this document or any matter on which the information is based (including but not limited to loss or damage arising as a result of reliance by recipients on the information or any part of it). Any liabilities are hereby expressly disclaimed.

		Rev	Date	Drm	Chk'd	App'd	Description
		M01	06/12/21	PP	JH	CA	ISSUE FOR PHASE 4: PLANNING

Udarás Náisiúnta Iompair
National Transport Authority

MOTT
MACDONALD

Date
06/12/21

Scale
1:500 @ A1
1:1000 @ A3

Drawn
P.POCZATKO

Checked
J.HAWE

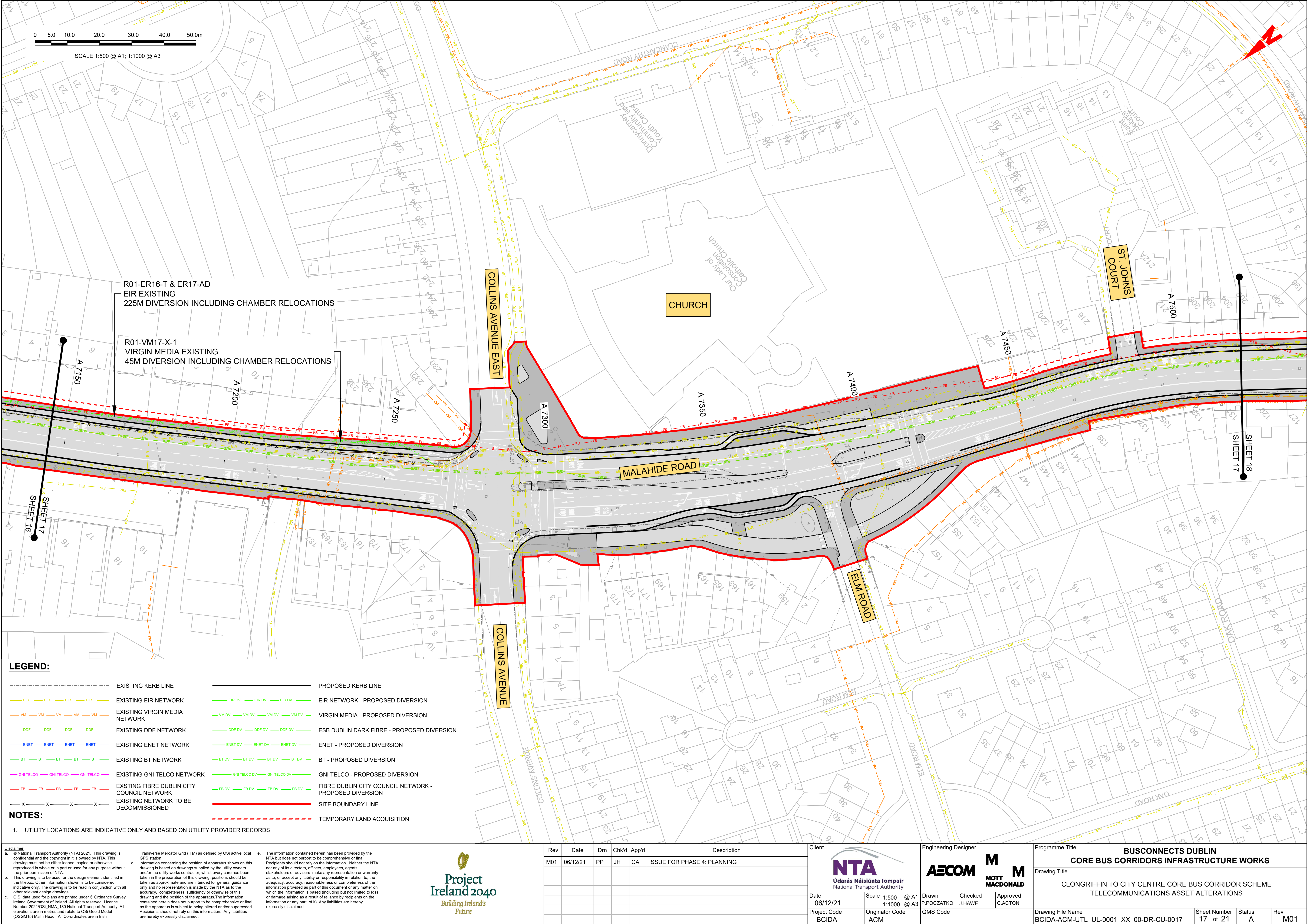
Approved
C.ACTON

Project Code
BCIDA

Originator Code
ACM

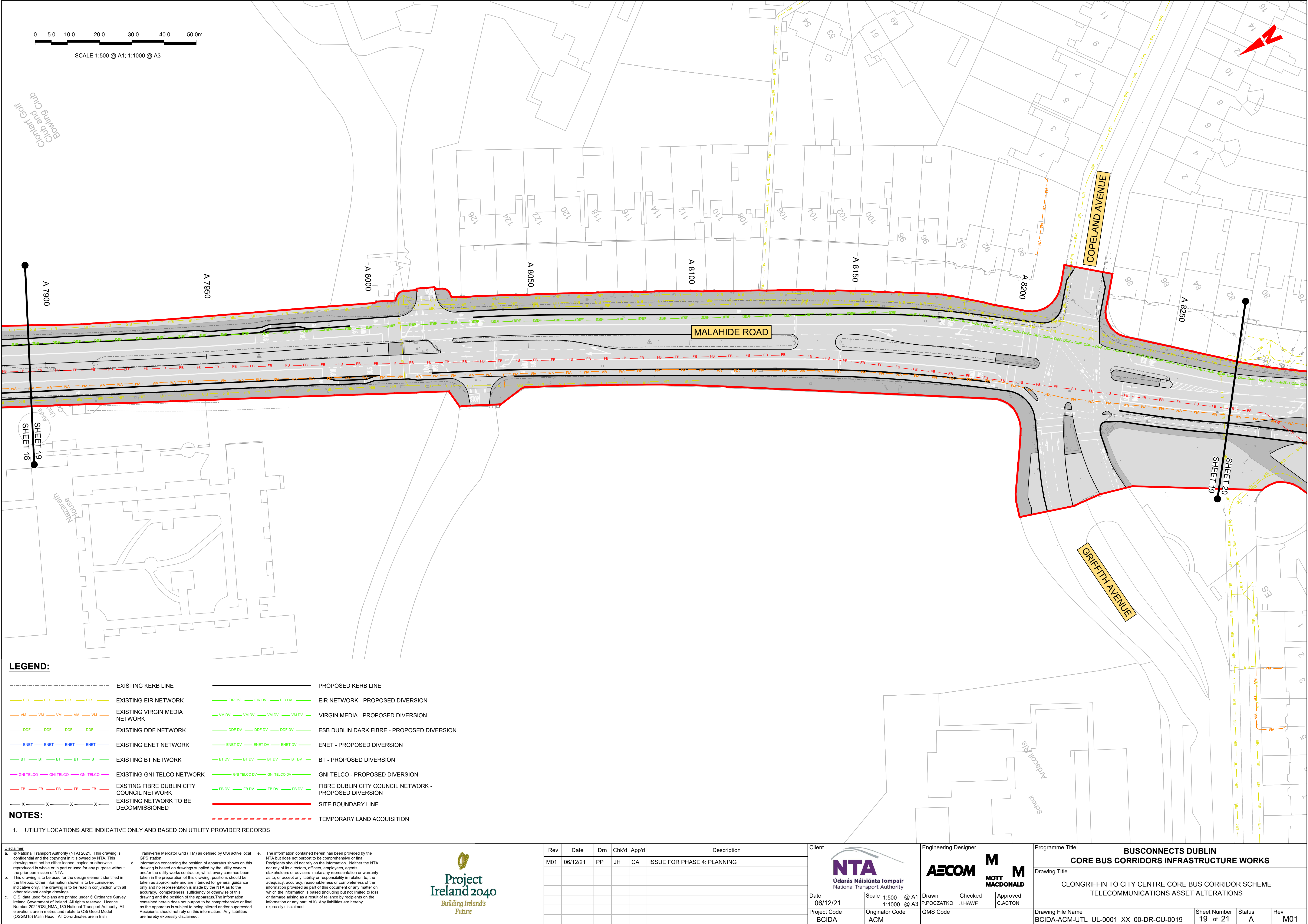
QMS Code

Programme Title BUSCONNECTS DUBLIN CORE BUS CORRIDORS INFRASTRUCTURE WORKS			
Drawing Title CLONGRIFFIN TO CITY CENTRE CORE BUS CORRIDOR SCHEME TELECOMMUNICATIONS ASSET ALTERATIONS			
Drawing File Name BCIDA-ACM-UTL_UL-0001_XX_00-DR-CU-0016	Sheet Number 16 of 21	Status A	Rev M01

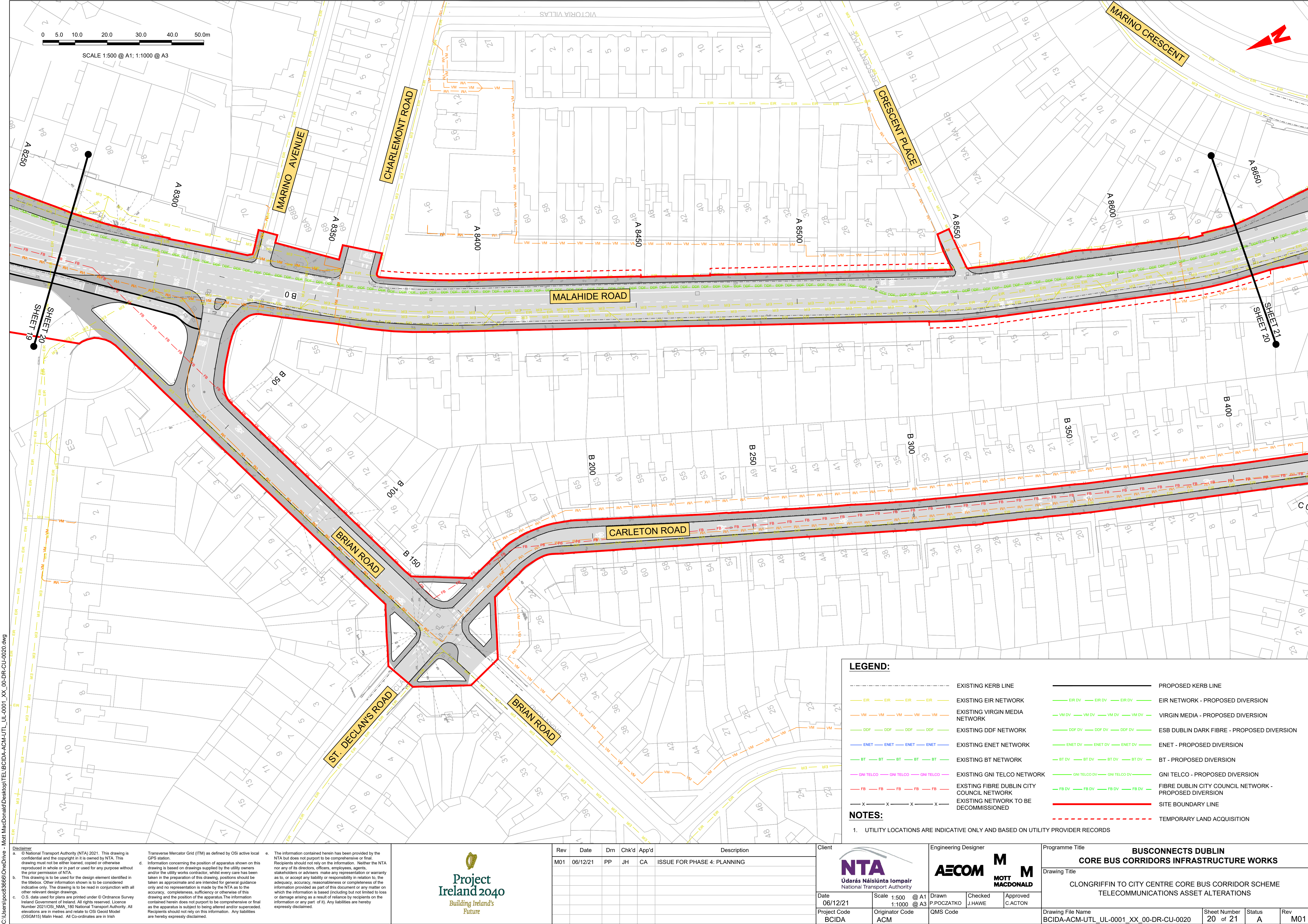


C:\Users\poc36666\OneDrive - Mott MacDonald\Desktop\TELECOMMUNICATIONS\UL-0001_XX_00-DR-CU-0017.dwg

C:\Users\poc8366\OneDrive - Mott MacDonald\Desktop\TELBCIDA-ACM-UTL_UL-0001_XX_00-DR-CU-0019.dwg



DO NOT SCALE USE FIGURED DIMENSIONS ONLY



LEGEND:

- EXISTING KERB LINE
- EXISTING EIR NETWORK
- EXISTING VIRGIN MEDIA NETWORK
- EXISTING DDF NETWORK
- EXISTING ENET NETWORK
- EXISTING BT NETWORK
- EXISTING GNI TELCO NETWORK
- EXISTING FIBRE DUBLIN CITY COUNCIL NETWORK
- EXISTING NETWORK TO BE DECOMMISSIONED
- PROPOSED KERB LINE
- EIR NETWORK - PROPOSED DIVERSION
- VIRGIN MEDIA - PROPOSED DIVERSION
- ESB DUBLIN DARK FIBRE - PROPOSED DIVERSION
- ENET - PROPOSED DIVERSION
- BT - PROPOSED DIVERSION
- GNI TELCO - PROPOSED DIVERSION
- FIBRE DUBLIN CITY COUNCIL NETWORK - PROPOSED DIVERSION
- SITE BOUNDARY LINE
- TEMPORARY LAND ACQUISITION

NOTES:

- 1. UTILITY LOCATIONS ARE INDICATIVE ONLY AND BASED ON UTILITY PROVIDER RECORDS

Disclaimer
a. © National Transport Authority (NTA) 2021. This drawing is confidential and the copyright in it is owned by NTA. This drawing must not be either loaned, copied or otherwise reproduced in whole or in part or used for any purpose without the prior permission of NTA.
b. This drawing is to be used for the design element identified in the titleblock. Other information shown is to be considered indicative only. The drawing is to be read in conjunction with all other relevant design drawings.
c. O.S. data used for plans are printed under © Ordnance Survey Ireland Government of Ireland. All rights reserved. Licence Number 2021/OSI_NMA_180 National Transport Authority. All elevations are in metres and relate to OSI Geoid Model (OSGM15) Mean Head. All Co-ordinates are in Irish Transverse Mercator Grid (ITM) as defined by OSI active local GPS station.
d. Information concerning the position of apparatus shown on this drawing is based on drawings supplied by the utility owners and/or the utility works contractor, whilst every care has been taken in the preparation of this drawing, positions should be taken as approximate and are intended for general guidance only and no representation is made by the NTA as to the accuracy, completeness, sufficiency or otherwise of this drawing and the position of the apparatus. The information contained herein does not purport to be comprehensive or final as the apparatus is subject to being altered and/or superceded. Recipients should not rely on this information. Any liabilities are hereby expressly disclaimed.
e. The information contained herein has been provided by the NTA but does not purport to be comprehensive or final. Recipients should not rely on the information. Neither the NTA nor any of its directors, officers, employees, agents, stakeholders or advisers make any representation or warranty as to, or accept any liability or responsibility in relation to, the adequacy, accuracy, reasonableness or completeness of the information provided as part of this document or any matter on which the information is based (including but not limited to loss or damage arising as a result of reliance by recipients on the information or any part of it). Any liabilities are hereby expressly disclaimed.



Rev	Date	Drn	Chk'd	App'd	Description
M01	06/12/21	PP	JH	CA	ISSUE FOR PHASE 4: PLANNING

Udarás Náisiúnta Iompair
National Transport Authority

Engineering Designer

MOTT MACDONALD

Date: 06/12/21

Scale: 1:500 @ A1
1:1000 @ A3

Drawn: P.POCZATKO

Checked: J.HAWE

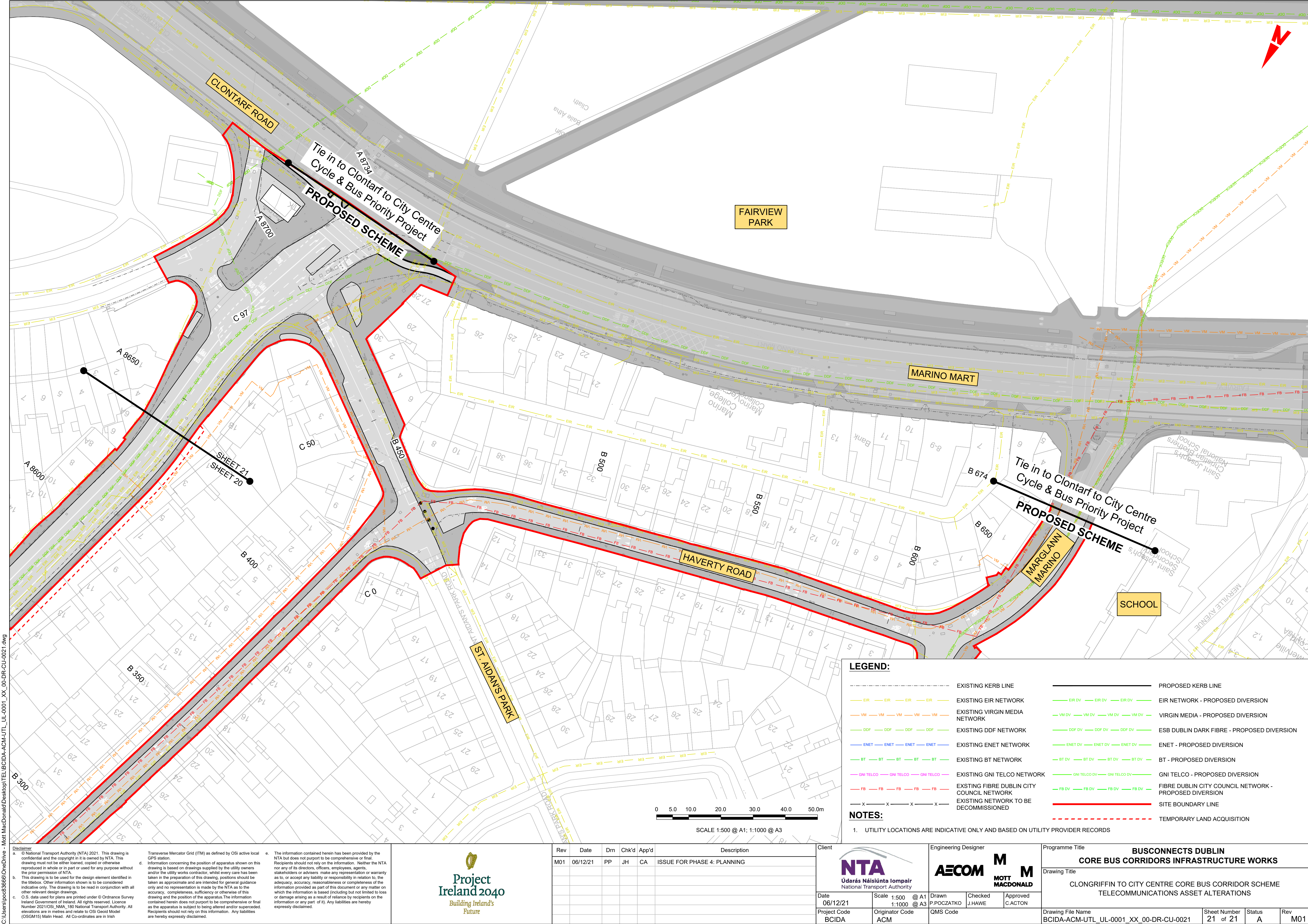
Approved: C.ACTON

Project Code: BCIDA

Originator Code: ACM

QMS Code:

Programme Title			
BUSCONNECTS DUBLIN CORE BUS CORRIDORS INFRASTRUCTURE WORKS			
Drawing Title			
CLONGRIFFIN TO CITY CENTRE CORE BUS CORRIDOR SCHEME TELECOMMUNICATIONS ASSET ALTERATIONS			
Drawing File Name		Sheet Number	Status
BCIDA-ACM-UTL_UL-0001_XX_00-DR-CU-0020		20 of 21	A
Rev			
M01			



LEGEND:

- EXISTING KERB LINE
- EXISTING EIR NETWORK
- EXISTING VIRGIN MEDIA NETWORK
- EXISTING DDF NETWORK
- EXISTING ENET NETWORK
- EXISTING BT NETWORK
- EXISTING GNI TELCO NETWORK
- EXISTING FIBRE DUBLIN CITY COUNCIL NETWORK
- EXISTING NETWORK TO BE DECOMMISSIONED
- PROPOSED KERB LINE
- EIR NETWORK - PROPOSED DIVERSION
- VIRGIN MEDIA - PROPOSED DIVERSION
- ESB DUBLIN DARK FIBRE - PROPOSED DIVERSION
- ENET - PROPOSED DIVERSION
- BT - PROPOSED DIVERSION
- GNI TELCO - PROPOSED DIVERSION
- FIBRE DUBLIN CITY COUNCIL NETWORK - PROPOSED DIVERSION
- SITE BOUNDARY LINE
- TEMPORARY LAND ACQUISITION

NOTES:

1. UTILITY LOCATIONS ARE INDICATIVE ONLY AND BASED ON UTILITY PROVIDER RECORDS

Disclaimer
a. © National Transport Authority (NTA) 2021. This drawing is confidential and the copyright in it is owned by NTA. This drawing must not be either loaned, copied or otherwise reproduced in whole or in part or used for any purpose without the prior permission of NTA.
b. This drawing is to be used for the design element identified in the titlebox. Other information shown is to be considered indicative only. The drawing is to be read in conjunction with all other relevant design drawings.
c. O.S. data used for plans are printed under © Ordnance Survey Ireland Government of Ireland. All rights reserved. Licence Number 2021/OSI_NMA_180 National Transport Authority. All elevations are in metres and relate to OSI Geoid Model (OSGM15) Mean Head. All Co-ordinates are in Irish Transverse Mercator Grid (ITM) as defined by OSI active local GPS station.
d. Information concerning the position of apparatus shown on this drawing is based on drawings supplied by the utility owners and/or the utility works contractor, whilst every care has been taken in the preparation of this drawing, positions should be taken as approximate and are intended for general guidance only and no representation is made by the NTA as to the accuracy, completeness, sufficiency or otherwise of this drawing and the position of the apparatus. The information contained herein does not purport to be comprehensive or final as the apparatus is subject to being altered and/or superceded. Recipients should not rely on this information. Any liabilities are hereby expressly disclaimed.
e. The information contained herein has been provided by the NTA but does not purport to be comprehensive or final. Recipients should not rely on the information. Neither the NTA nor any of its directors, officers, employees, agents, stakeholders or advisers make any representation or warranty as to, or accept any liability or responsibility in relation to, the adequacy, accuracy, reasonableness or completeness of the information provided as part of this document or any matter on which the information is based (including but not limited to loss or damage arising as a result of reliance by recipients on the information or any part of it). Any liabilities are hereby expressly disclaimed.



Rev	Date	Drm	Chk'd	App'd	Description
M01	06/12/21	PP	JH	CA	ISSUE FOR PHASE 4: PLANNING

Client
NTA
Údarás Náisiúnta Iompair
National Transport Authority

Date
06/12/21

Scale
1:500 @ A1
1:1000 @ A3

Project Code
BCIDA

Originator Code
ACM

Engineering Designer
AECOM
P.POCZATKO

Checked
J.HAWE

Approved
C.ACTON

Programme Title BUSCONNECTS DUBLIN CORE BUS CORRIDORS INFRASTRUCTURE WORKS			
Drawing Title CLONGRIFFIN TO CITY CENTRE CORE BUS CORRIDOR SCHEME TELECOMMUNICATIONS ASSET ALTERATIONS			
Drawing File Name BCIDA-ACM-UTL_UL-0001_XX_00-DR-CU-0021	Sheet Number 21 of 21	Status A	Rev M01